

MAY 2013

# montclair

MAGAZINE

ACTOR

**PATRICK  
WILSON**

SHINES A SPOTLIGHT ON

**THE MONTCLAIR  
FILM FESTIVAL**

**PLUS**

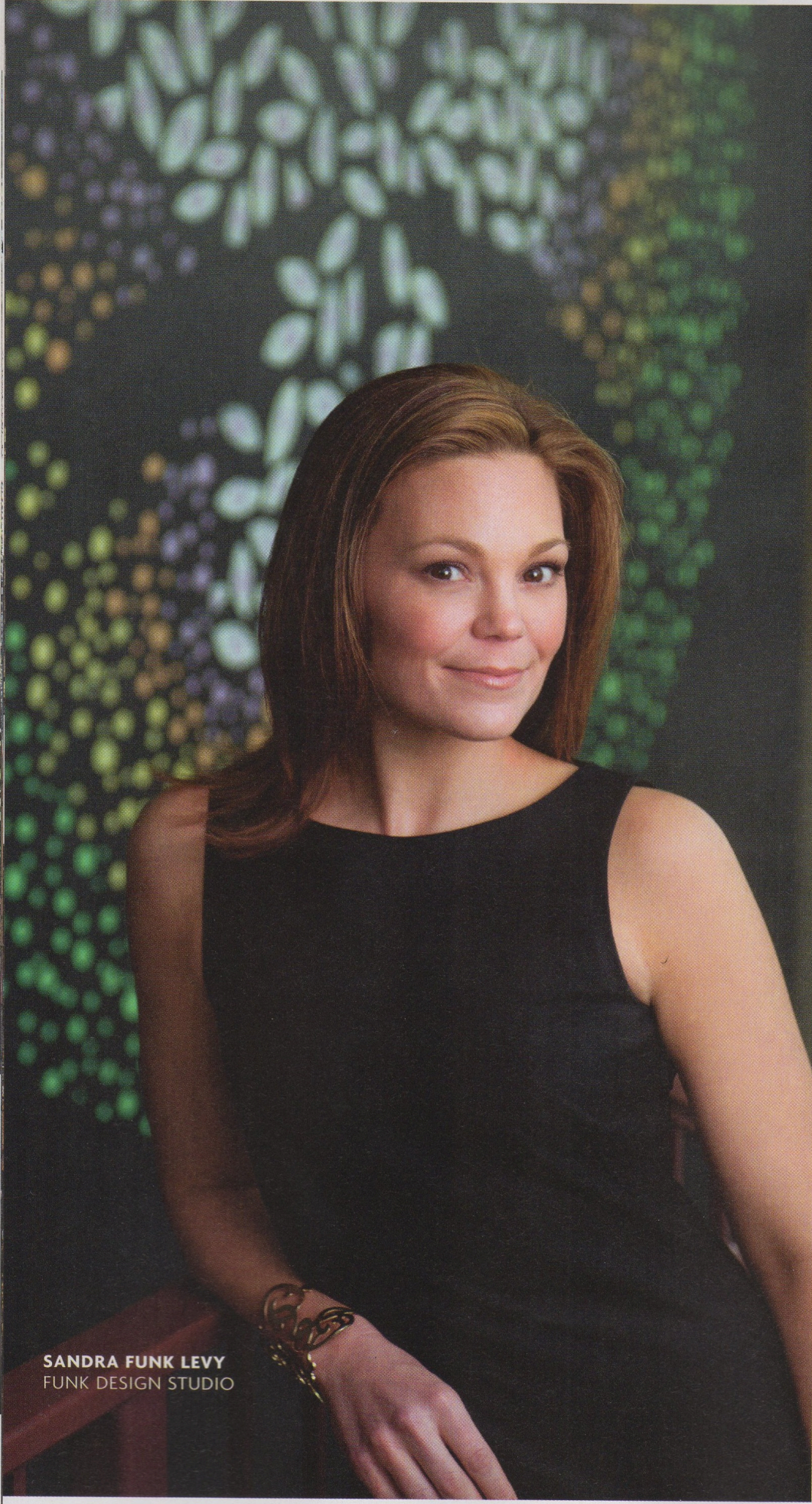
PICTURE PERFECT  
INTERIORS

**FASHION-FORWARD  
PHOTOS,  
TAXIDERM  
OPTIONAL**

THE CRANE  
HOMESTEAD  
TODAY







**SANDRA FUNK LEVY**  
FUNK DESIGN STUDIO

## PRETTY, YET PRACTICAL

It was while constructing a navigable website for GE Capital that former financial consultant Sandra Funk Levy discovered her nascent love of design. In 2001, she left the dotcom where she was working, and a year later was designing celebrity Joy Behar's home office, and being featured on her TV talk show, *The View*. Since then, Levy has worked on commercial projects, such as the original design of Montclair's Toast restaurant, and residences in Manhattan, Chicago, Connecticut, and throughout New Jersey. Right, this Estate section home looks "classic, but rooted in a traditional aesthetic," she says, with an Asian antique coffee table, unfussy window treatments and emerald green pillows. The Dash & Albert indoor-outdoor rug is tough enough for the owner's four dogs and two kids. In the dining room below, new window treatments, upholstery and lighting brighten the room. Bottom right, Levy chose a chocolate brown paint color with a matte finish to "cozy up" her own bedroom. The mirror is a junk store find, painted white to set off the walls. Levy bought the antique Asian bench at a fair in Chicago. The bed frame is from Ethan Allen, a former employer, and the silk rug provides a quiet anchor. ➤

LEVY: ANNE-MARIE CARUSO





